

OpenKnowledge Deliverable 6.6 - Annex A
Individual Service Sequence diagrams, main classes and related WSDL files

In this Annex we include the detailed sequence/interaction diagrams, main classes and the current WSDL files for the proposed Web Service Cluster implementing the generic Map Request Service described in the main document. The diagrams and the WSDL functionalities have been developed at the University of Trento on the requirements provided by the Civilian Protection department of Autonomous Province of Trento.

A.1 Gazeteer Service

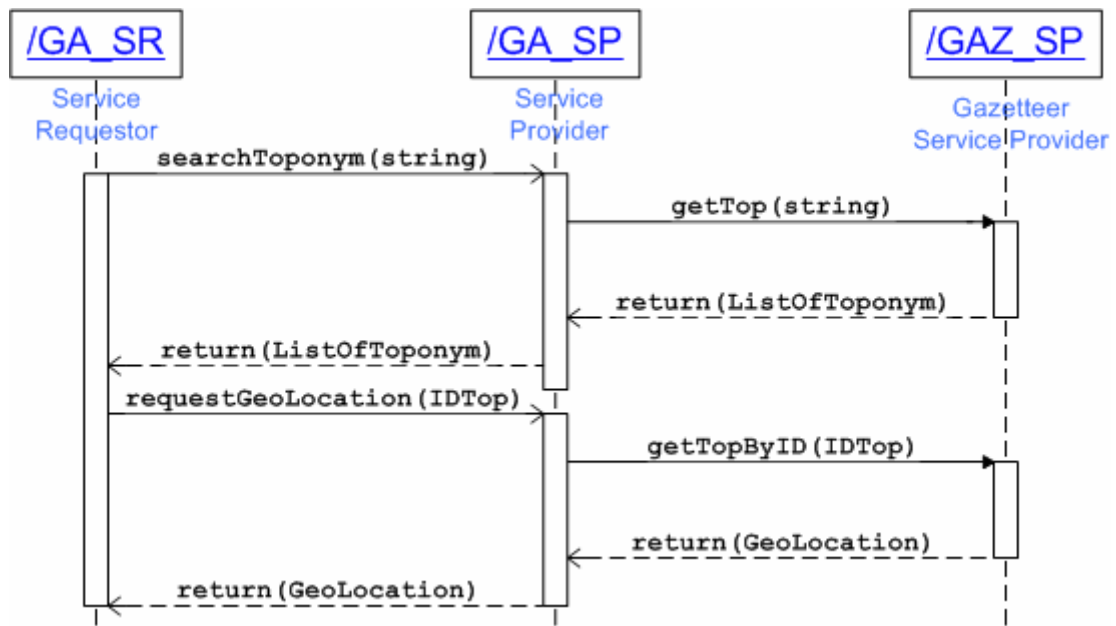


Figure A.1.1: Sequence/Interaction Diagram for the Gazeteer Service

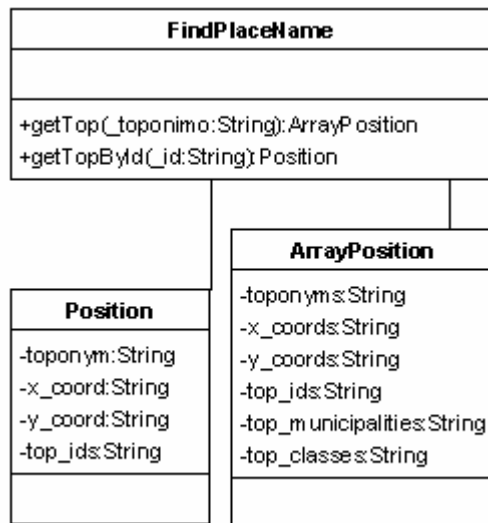


Figure A.1.2: Main Class diagrams for the Gazeteer Service

WSDL: FindPLaceNameTN.xml

```
<?xml version="1.0" encoding="UTF-8" ?>
= <wsdl:definitions
  targetNamespace="http://192.168.233.212:8080/axis/services/FindPlaceName
  eTN" xmlns:apachesoap="http://xml.apache.org/xml-soap"
  xmlns:impl="http://192.168.233.212:8080/axis/services/FindPlaceNameTN"
  xmlns:intf="http://192.168.233.212:8080/axis/services/FindPlaceNameTN"
  xmlns:soapenc="http://schemas.xmlsoap.org/soap/encoding/"
  xmlns:tns1="urn:findposition" xmlns:wSDL="http://schemas.xmlsoap.org/wSDL/"
  xmlns:wSDLsoap="http://schemas.xmlsoap.org/wSDL/soap/"
  xmlns:xsd="http://www.w3.org/2001/XMLSchema">
- <!--
WSDL created by Apache Axis version: 1.4
Built on Apr 22, 2006 (06:55:48 PDT)
-->
= <wsdl:types>
= <schema targetNamespace="urn:findposition"
  xmlns="http://www.w3.org/2001/XMLSchema">
  <import namespace="http://schemas.xmlsoap.org/soap/encoding/" />
= <complexType name="ArrayPosition">
= <sequence>
  <element name="top_Classi" nillable="true" type="xsd:string" />
  <element name="top_Comuni" nillable="true" type="xsd:string" />
  <element name="top_Ids" nillable="true" type="xsd:string" />
  <element name="toponimi" nillable="true" type="xsd:string" />
  <element name="x_Coords" nillable="true" type="xsd:string" />
  <element name="y_Coords" nillable="true" type="xsd:string" />
  </sequence>
  </complexType>
= <complexType name="Position">
= <sequence>
  <element name="top_Ids" nillable="true" type="xsd:string" />
  <element name="toponimo" nillable="true" type="xsd:string" />
  <element name="x_Coord" nillable="true" type="xsd:string" />
  <element name="y_Coord" nillable="true" type="xsd:string" />
  </sequence>
  </complexType>
  </schema>
  </wsdl:types>
= <wsdl:message name="getTopRequest">
  <wsdl:part name="toponimo" type="xsd:string" />
  </wsdl:message>
= <wsdl:message name="getTopByIdRequest">
  <wsdl:part name="top_id" type="xsd:string" />
  </wsdl:message>
= <wsdl:message name="getTopByIdResponse">
  <wsdl:part name="getTopByIdReturn" type="tns1:Position" />
  </wsdl:message>
= <wsdl:message name="getTopResponse">
  <wsdl:part name="getTopReturn" type="tns1:ArrayPosition" />
  </wsdl:message>
= <wsdl:portType name="TopImpl">
= <wsdl:operation name="getTop" parameterOrder="toponimo">
  <wsdl:input message="impl:getTopRequest" name="getTopRequest" />
```

```

<wsdl:output message="impl:getTopResponse" name="getTopResponse" />
  </wsdl:operation>
= <wsdl:operation name="getTopById" parameterOrder="top_id">
  <wsdl:input message="impl:getTopByIdRequest" name="getTopByIdRequest" />
  <wsdl:output message="impl:getTopByIdResponse" name="getTopByIdResponse"
    />
  </wsdl:operation>
  </wsdl:portType>
= <wsdl:binding name="FindPlaceNameTNSoapBinding" type="impl:TopImpl">
  <wsdlsoap:binding style="rpc" transport="http://schemas.xmlsoap.org/soap/http"
    />
= <wsdl:operation name="getTop">
  <wsdlsoap:operation soapAction="" />
= <wsdl:input name="getTopRequest">
  <wsdlsoap:body encodingStyle="http://schemas.xmlsoap.org/soap/encoding/"
    namespace="http://wsdl2service.top" use="encoded" />
  </wsdl:input>
= <wsdl:output name="getTopResponse">
  <wsdlsoap:body encodingStyle="http://schemas.xmlsoap.org/soap/encoding/"
    namespace="http://192.168.233.212:8080/axis/services/FindPlaceNameTN"
    use="encoded" />
  </wsdl:output>
  </wsdl:operation>
= <wsdl:operation name="getTopById">
  <wsdlsoap:operation soapAction="" />
= <wsdl:input name="getTopByIdRequest">
  <wsdlsoap:body encodingStyle="http://schemas.xmlsoap.org/soap/encoding/"
    namespace="http://wsdl2service.top" use="encoded" />
  </wsdl:input>
= <wsdl:output name="getTopByIdResponse">
  <wsdlsoap:body encodingStyle="http://schemas.xmlsoap.org/soap/encoding/"
    namespace="http://192.168.233.212:8080/axis/services/FindPlaceNameTN"
    use="encoded" />
  </wsdl:output>
  </wsdl:operation>
  </wsdl:binding>
= <wsdl:service name="TopImplService">
= <wsdl:port binding="impl:FindPlaceNameTNSoapBinding"
  name="FindPlaceNameTN">
  <wsdlsoap:address
    location="http://192.168.233.212:8080/axis/services/FindPlaceNameTN" />
  </wsdl:port>
  </wsdl:service>
</wsdl:definitions>

```

A.2 (Core) Map Request Service

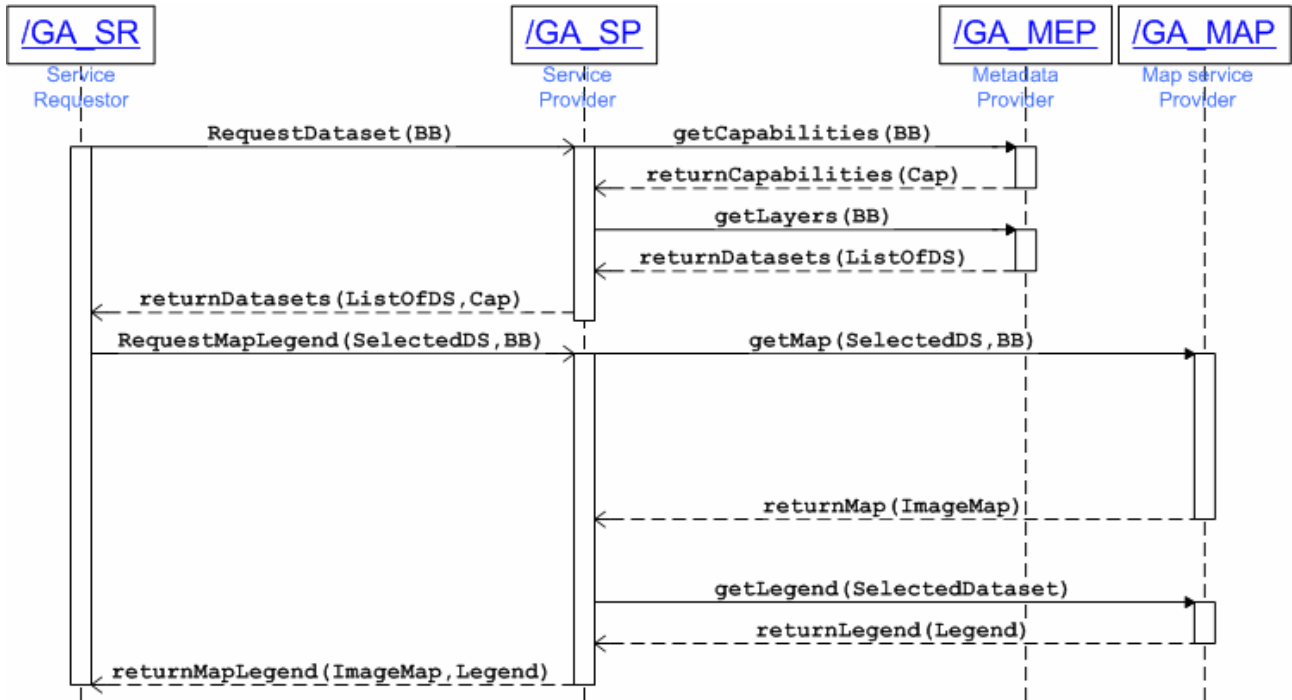


Figure A.2.1: Sequence/Interaction Diagram for the Map Request Service

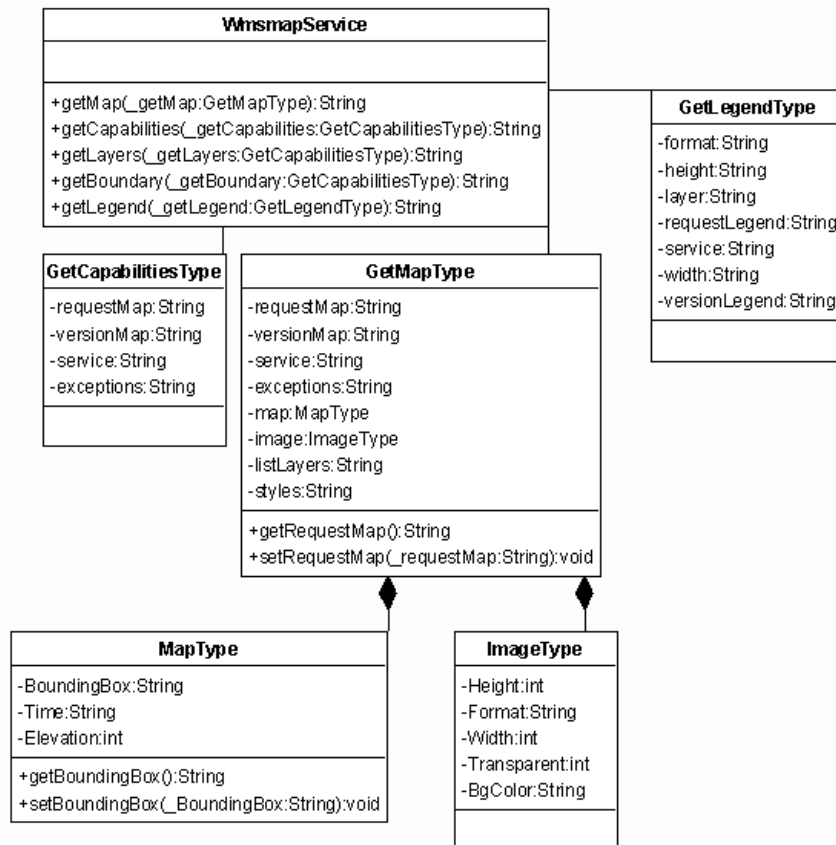


Figure A.2.1: Main Class diagrams for the Map Request Service

WSDL: WmsMapService.xml

```
<?xml version="1.0" encoding="UTF-8" ?>
<wsdl:definitions
  targetNamespace="http://192.168.233.212:8080/axis/services/WmsMapService"
  xmlns:apachesoap="http://xml.apache.org/xml-soap"
  xmlns:impl="http://192.168.233.212:8080/axis/services/WmsMapService"
  xmlns:intf="http://192.168.233.212:8080/axis/services/WmsMapService"
  xmlns:soapenc="http://schemas.xmlsoap.org/soap/encoding/"
  xmlns:tns1="urn:wmsmaptype" xmlns:wsdl="http://schemas.xmlsoap.org/wsdl/"
  xmlns:wsdlsoap="http://schemas.xmlsoap.org/wsdl/soap/"
  xmlns:xsd="http://www.w3.org/2001/XMLSchema">
  <!--
WSDL created by Apache Axis version: 1.4
Built on Apr 22, 2006 (06:55:48 PDT)
  -->
  <wsdl:types>
  <schema targetNamespace="urn:wmsmaptype"
    xmlns="http://www.w3.org/2001/XMLSchema">
    <import namespace="http://schemas.xmlsoap.org/soap/encoding/" />
  <complexType name="GetCapabilitiesType">
  <sequence>
    <element name="exceptions" nillable="true" type="xsd:string" />
    <element name="requestMap" nillable="true" type="xsd:string" />
    <element name="service" nillable="true" type="xsd:string" />
    <element name="versionMap" nillable="true" type="xsd:string" />
  </sequence>
  </complexType>
  <complexType name="GetLegendType">
  <sequence>
    <element name="format" nillable="true" type="xsd:string" />
    <element name="height" nillable="true" type="xsd:string" />
    <element name="layer" nillable="true" type="xsd:string" />
    <element name="requestLegend" nillable="true" type="xsd:string" />
    <element name="service" nillable="true" type="xsd:string" />
    <element name="versionLegend" nillable="true" type="xsd:string" />
    <element name="width" nillable="true" type="xsd:string" />
  </sequence>
  </complexType>
  <complexType name="ImageType">
  <sequence>
    <element name="BGColor" nillable="true" type="xsd:string" />
    <element name="format" nillable="true" type="xsd:string" />
    <element name="height" type="xsd:int" />
    <element name="transparent" nillable="true" type="xsd:string" />
    <element name="width" type="xsd:int" />
  </sequence>
  </complexType>
  <complexType name="MapType">
  <sequence>
    <element name="boundingBox" nillable="true" type="xsd:string" />
    <element name="elevation" nillable="true" type="xsd:int" />
    <element name="time" nillable="true" type="xsd:string" />
  </sequence>
  </complexType>
  </wsdl:types>
  </wsdl:definitions>
```

```

    </sequence>
  </complexType>
<complexType name="GetMapType">
<sequence>
  <element name="exceptions" nillable="true" type="xsd:string" />
  <element name="image" nillable="true" type="tns1:ImageType" />
  <element name="listLayers" nillable="true" type="xsd:string" />
  <element name="map" nillable="true" type="tns1:MapType" />
  <element name="requestMap" nillable="true" type="xsd:string" />
  <element name="service" nillable="true" type="xsd:string" />
  <element name="srs" nillable="true" type="xsd:string" />
  <element name="styles" nillable="true" type="xsd:string" />
  <element name="versionMap" nillable="true" type="xsd:string" />
</sequence>
</complexType>
</schema>
</wsdl:types>
<wsdl:message name="getCapabilitiesRequest">
  <wsdl:part name="getcapabilitiesParameters" type="tns1:GetCapabilitiesType" />
</wsdl:message>
<wsdl:message name="getBoundaryResponse">
  <wsdl:part name="getBoundaryReturn" type="xsd:string" />
</wsdl:message>
<wsdl:message name="getMapRequest">
  <wsdl:part name="getmapParameters" type="tns1:GetMapType" />
</wsdl:message>
<wsdl:message name="getMapResponse">
  <wsdl:part name="getMapReturn" type="xsd:string" />
</wsdl:message>
<wsdl:message name="getLegendRequest">
  <wsdl:part name="getlegendParameters" type="tns1:GetLegendType" />
</wsdl:message>
<wsdl:message name="getCapabilitiesResponse">
  <wsdl:part name="getCapabilitiesReturn" type="xsd:string" />
</wsdl:message>
<wsdl:message name="getBoundaryRequest">
  <wsdl:part name="getBoundaryParameters" type="tns1:GetCapabilitiesType" />
</wsdl:message>
<wsdl:message name="getLayersRequest">
  <wsdl:part name="getlayersParameters" type="tns1:GetCapabilitiesType" />
</wsdl:message>
<wsdl:message name="getLegendResponse">
  <wsdl:part name="getLegendReturn" type="xsd:string" />
</wsdl:message>
<wsdl:message name="getLayersResponse">
  <wsdl:part name="getLayersReturn" type="xsd:string" />
</wsdl:message>
<wsdl:portType name="WmsmapImpl">
<wsdl:operation name="getLayers" parameterOrder="getlayersParameters">
  <wsdl:input message="impl:getLayersRequest" name="getLayersRequest" />
  <wsdl:output message="impl:getLayersResponse" name="getLayersResponse" />
</wsdl:operation>
<wsdl:operation name="getBoundary" parameterOrder="getBoundaryParameters">
  <wsdl:input message="impl:getBoundaryRequest" name="getBoundaryRequest" />

```

```

<wsdl:output message="impl:getBoundaryResponse" name="getBoundaryResponse"
  />
</wsdl:operation>
- <wsdl:operation name="getLegend" parameterOrder="getlegendParameters">
  <wsdl:input message="impl:getLegendRequest" name="getLegendRequest" />
  <wsdl:output message="impl:getLegendResponse" name="getLegendResponse" />
  </wsdl:operation>
- <wsdl:operation name="getMap" parameterOrder="getmapParameters">
  <wsdl:input message="impl:getMapRequest" name="getMapRequest" />
  <wsdl:output message="impl:getMapResponse" name="getMapResponse" />
  </wsdl:operation>
- <wsdl:operation name="getCapabilities" parameterOrder="getcapabilitiesParameters">
  <wsdl:input message="impl:getCapabilitiesRequest" name="getCapabilitiesRequest"
  />
  <wsdl:output message="impl:getCapabilitiesResponse"
    name="getCapabilitiesResponse" />
  </wsdl:operation>
</wsdl:portType>
- <wsdl:binding name="WmsMapServiceSoapBinding" type="impl:WmsmapImpl">
  <wsdlsoap:binding style="rpc" transport="http://schemas.xmlsoap.org/soap/http" />
- <wsdl:operation name="getLayers">
  <wsdlsoap:operation soapAction="" />
- <wsdl:input name="getLayersRequest">
  <wsdlsoap:body encodingStyle="http://schemas.xmlsoap.org/soap/encoding/"
    namespace="http://wsdl2service.wmsmap" use="encoded" />
  </wsdl:input>
- <wsdl:output name="getLayersResponse">
  <wsdlsoap:body encodingStyle="http://schemas.xmlsoap.org/soap/encoding/"
    namespace="http://192.168.233.212:8080/axis/services/WmsMapService"
    use="encoded" />
  </wsdl:output>
</wsdl:operation>
- <wsdl:operation name="getBoundary">
  <wsdlsoap:operation soapAction="" />
- <wsdl:input name="getBoundaryRequest">
  <wsdlsoap:body encodingStyle="http://schemas.xmlsoap.org/soap/encoding/"
    namespace="http://wsdl2service.wmsmap" use="encoded" />
  </wsdl:input>
- <wsdl:output name="getBoundaryResponse">
  <wsdlsoap:body encodingStyle="http://schemas.xmlsoap.org/soap/encoding/"
    namespace="http://192.168.233.212:8080/axis/services/WmsMapService"
    use="encoded" />
  </wsdl:output>
</wsdl:operation>
- <wsdl:operation name="getLegend">
  <wsdlsoap:operation soapAction="" />
- <wsdl:input name="getLegendRequest">
  <wsdlsoap:body encodingStyle="http://schemas.xmlsoap.org/soap/encoding/"
    namespace="http://wsdl2service.wmsmap" use="encoded" />
  </wsdl:input>
- <wsdl:output name="getLegendResponse">
  <wsdlsoap:body encodingStyle="http://schemas.xmlsoap.org/soap/encoding/"
    namespace="http://192.168.233.212:8080/axis/services/WmsMapService"
    use="encoded" />
  </wsdl:output>

```

```

    </wsdl:operation>
- <wsdl:operation name="getMap">
  <wsdlsoap:operation soapAction="" />
- <wsdl:input name="getMapRequest">
  <wsdlsoap:body encodingStyle="http://schemas.xmlsoap.org/soap/encoding/"
    namespace="http://wsdl2service.wmsmap" use="encoded" />
  </wsdl:input>
- <wsdl:output name="getMapResponse">
  <wsdlsoap:body encodingStyle="http://schemas.xmlsoap.org/soap/encoding/"
    namespace="http://192.168.233.212:8080/axis/services/WmsMapService"
    use="encoded" />
  </wsdl:output>
</wsdl:operation>
- <wsdl:operation name="getCapabilities">
  <wsdlsoap:operation soapAction="" />
- <wsdl:input name="getCapabilitiesRequest">
  <wsdlsoap:body encodingStyle="http://schemas.xmlsoap.org/soap/encoding/"
    namespace="http://wsdl2service.wmsmap" use="encoded" />
  </wsdl:input>
- <wsdl:output name="getCapabilitiesResponse">
  <wsdlsoap:body encodingStyle="http://schemas.xmlsoap.org/soap/encoding/"
    namespace="http://192.168.233.212:8080/axis/services/WmsMapService"
    use="encoded" />
  </wsdl:output>
</wsdl:operation>
</wsdl:binding>
- <wsdl:service name="WmsmapI mplService">
- <wsdl:port binding="impl:WmsMapServiceSoapBinding" name="WmsMapService">
  <wsdlsoap:address
    location="http://192.168.233.212:8080/axis/services/WmsMapService" />
  </wsdl:port>
</wsdl:service>
</wsdl:definitions>

```


A.3 Download Service

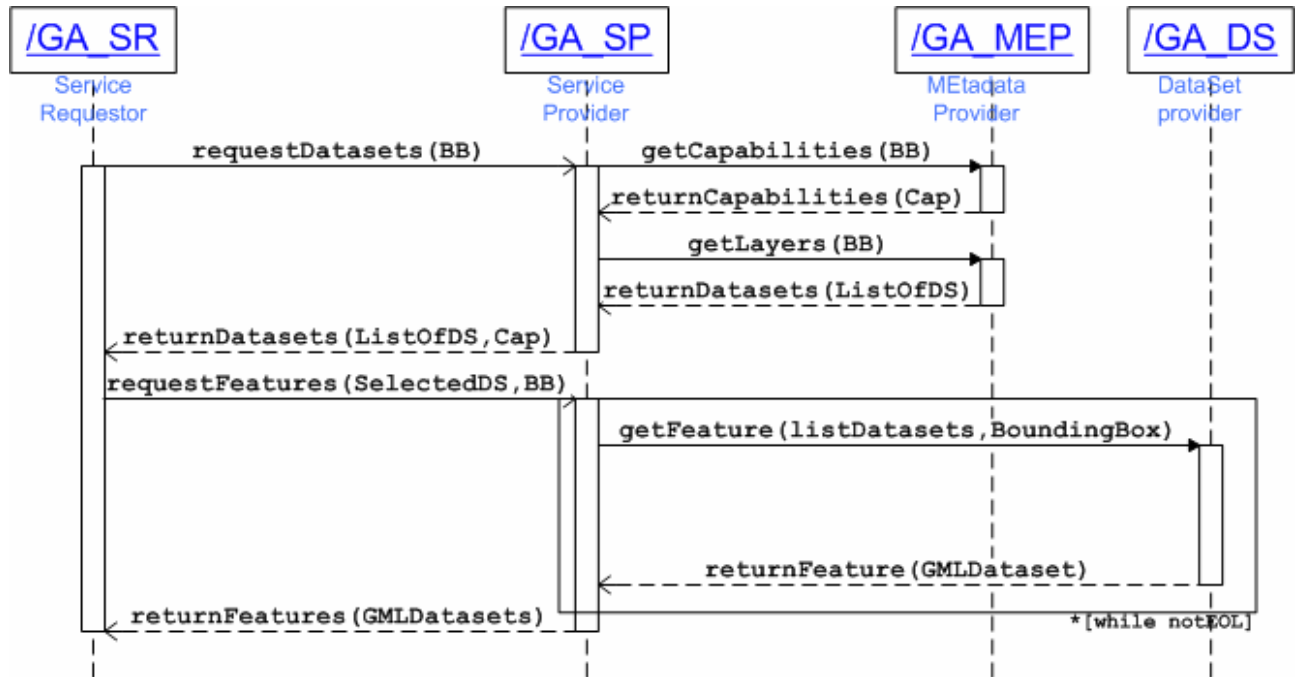


Figure A.3.1: Sequence/Interaction Diagram for the Download Request Service

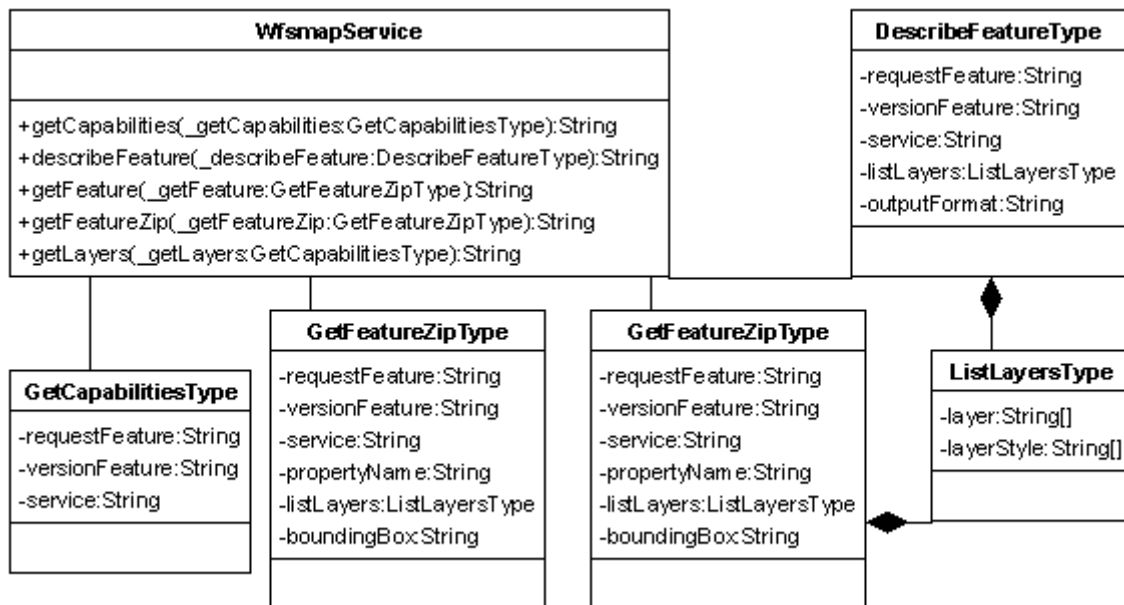


Figure A.3.2 Main Class diagrams for the Download Request Service

WSDL: WfsMapService.xml

```
<?xml version="1.0" encoding="UTF-8" ?>
= <wsdl:definitions
  targetNamespace="http://192.168.233.212:8080/axis/services/WmsMapService"
  xmlns:apachesoap="http://xml.apache.org/xml-soap"
  xmlns:impl="http://192.168.233.212:8080/axis/services/WmsMapService"
  xmlns:intf="http://192.168.233.212:8080/axis/services/WmsMapService"
  xmlns:soapenc="http://schemas.xmlsoap.org/soap/encoding/"
  xmlns:tns1="urn:wmsmaptype" xmlns:wsdl="http://schemas.xmlsoap.org/wsdl/"
  xmlns:wsdlsoap="http://schemas.xmlsoap.org/wsdl/soap/"
  xmlns:xsd="http://www.w3.org/2001/XMLSchema">
- <!--
WSDL created by Apache Axis version: 1.4
Built on Apr 22, 2006 (06:55:48 PDT)
-->
= <wsdl:types>
= <schema targetNamespace="urn:wmsmaptype"
  xmlns="http://www.w3.org/2001/XMLSchema">
  <import namespace="http://schemas.xmlsoap.org/soap/encoding/" />
= <complexType name="GetCapabilitiesType">
= <sequence>
  <element name="exceptions" nillable="true" type="xsd:string" />
  <element name="requestMap" nillable="true" type="xsd:string" />
  <element name="service" nillable="true" type="xsd:string" />
  <element name="versionMap" nillable="true" type="xsd:string" />
  </sequence>
  </complexType>
= <complexType name="GetLegendType">
= <sequence>
  <element name="format" nillable="true" type="xsd:string" />
  <element name="height" nillable="true" type="xsd:string" />
  <element name="layer" nillable="true" type="xsd:string" />
  <element name="requestLegend" nillable="true" type="xsd:string" />
  <element name="service" nillable="true" type="xsd:string" />
  <element name="versionLegend" nillable="true" type="xsd:string" />
  <element name="width" nillable="true" type="xsd:string" />
  </sequence>
  </complexType>
= <complexType name="ImageType">
= <sequence>
  <element name="BGColor" nillable="true" type="xsd:string" />
  <element name="format" nillable="true" type="xsd:string" />
  <element name="height" type="xsd:int" />
  <element name="transparent" nillable="true" type="xsd:string" />
  <element name="width" type="xsd:int" />
  </sequence>
  </complexType>
= <complexType name="MapType">
= <sequence>
  <element name="boundingBox" nillable="true" type="xsd:string" />
  <element name="elevation" nillable="true" type="xsd:int" />
  <element name="time" nillable="true" type="xsd:string" />
  </sequence>
```

```

    </complexType>
  <complexType name="GetMapType">
    <sequence>
      <element name="exceptions" nillable="true" type="xsd:string" />
      <element name="image" nillable="true" type="tns1:ImageType" />
      <element name="listLayers" nillable="true" type="xsd:string" />
      <element name="map" nillable="true" type="tns1:MapType" />
      <element name="requestMap" nillable="true" type="xsd:string" />
      <element name="service" nillable="true" type="xsd:string" />
      <element name="srs" nillable="true" type="xsd:string" />
      <element name="styles" nillable="true" type="xsd:string" />
      <element name="versionMap" nillable="true" type="xsd:string" />
    </sequence>
  </complexType>
</schema>
</wsdl:types>
<wsdl:message name="getCapabilitiesRequest">
  <wsdl:part name="getcapabilitiesParameters" type="tns1:GetCapabilitiesType" />
</wsdl:message>
<wsdl:message name="getBoundaryResponse">
  <wsdl:part name="getBoundaryReturn" type="xsd:string" />
</wsdl:message>
<wsdl:message name="getMapRequest">
  <wsdl:part name="getmapParameters" type="tns1:GetMapType" />
</wsdl:message>
<wsdl:message name="getMapResponse">
  <wsdl:part name="getMapReturn" type="xsd:string" />
</wsdl:message>
<wsdl:message name="getLegendRequest">
  <wsdl:part name="getlegendParameters" type="tns1:GetLegendType" />
</wsdl:message>
<wsdl:message name="getCapabilitiesResponse">
  <wsdl:part name="getCapabilitiesReturn" type="xsd:string" />
</wsdl:message>
<wsdl:message name="getBoundaryRequest">
  <wsdl:part name="getBoundaryParameters" type="tns1:GetCapabilitiesType" />
</wsdl:message>
<wsdl:message name="getLayersRequest">
  <wsdl:part name="getlayersParameters" type="tns1:GetCapabilitiesType" />
</wsdl:message>
<wsdl:message name="getLegendResponse">
  <wsdl:part name="getLegendReturn" type="xsd:string" />
</wsdl:message>
<wsdl:message name="getLayersResponse">
  <wsdl:part name="getLayersReturn" type="xsd:string" />
</wsdl:message>
<wsdl:portType name="WmsmapImpl">
  <wsdl:operation name="getLayers" parameterOrder="getlayersParameters">
    <wsdl:input message="impl:getLayersRequest" name="getLayersRequest" />
    <wsdl:output message="impl:getLayersResponse" name="getLayersResponse" />
  </wsdl:operation>
  <wsdl:operation name="getBoundary" parameterOrder="getBoundaryParameters">
    <wsdl:input message="impl:getBoundaryRequest" name="getBoundaryRequest" />

```

```

<wsdl:output message="impl:getBoundaryResponse" name="getBoundaryResponse"
  />
</wsdl:operation>
- <wsdl:operation name="getLegend" parameterOrder="getlegendParameters">
  <wsdl:input message="impl:getLegendRequest" name="getLegendRequest" />
  <wsdl:output message="impl:getLegendResponse" name="getLegendResponse" />
  </wsdl:operation>
- <wsdl:operation name="getMap" parameterOrder="getmapParameters">
  <wsdl:input message="impl:getMapRequest" name="getMapRequest" />
  <wsdl:output message="impl:getMapResponse" name="getMapResponse" />
  </wsdl:operation>
- <wsdl:operation name="getCapabilities" parameterOrder="getcapabilitiesParameters">
  <wsdl:input message="impl:getCapabilitiesRequest" name="getCapabilitiesRequest"
  />
  <wsdl:output message="impl:getCapabilitiesResponse"
    name="getCapabilitiesResponse" />
  </wsdl:operation>
</wsdl:portType>
- <wsdl:binding name="WmsMapServiceSoapBinding" type="impl:WmsmapImpl">
  <wsdlsoap:binding style="rpc" transport="http://schemas.xmlsoap.org/soap/http" />
- <wsdl:operation name="getLayers">
  <wsdlsoap:operation soapAction="" />
- <wsdl:input name="getLayersRequest">
  <wsdlsoap:body encodingStyle="http://schemas.xmlsoap.org/soap/encoding/"
    namespace="http://wsdl2service.wmsmap" use="encoded" />
  </wsdl:input>
- <wsdl:output name="getLayersResponse">
  <wsdlsoap:body encodingStyle="http://schemas.xmlsoap.org/soap/encoding/"
    namespace="http://192.168.233.212:8080/axis/services/WmsMapService"
    use="encoded" />
  </wsdl:output>
</wsdl:operation>
- <wsdl:operation name="getBoundary">
  <wsdlsoap:operation soapAction="" />
- <wsdl:input name="getBoundaryRequest">
  <wsdlsoap:body encodingStyle="http://schemas.xmlsoap.org/soap/encoding/"
    namespace="http://wsdl2service.wmsmap" use="encoded" />
  </wsdl:input>
- <wsdl:output name="getBoundaryResponse">
  <wsdlsoap:body encodingStyle="http://schemas.xmlsoap.org/soap/encoding/"
    namespace="http://192.168.233.212:8080/axis/services/WmsMapService"
    use="encoded" />
  </wsdl:output>
</wsdl:operation>
- <wsdl:operation name="getLegend">
  <wsdlsoap:operation soapAction="" />
- <wsdl:input name="getLegendRequest">
  <wsdlsoap:body encodingStyle="http://schemas.xmlsoap.org/soap/encoding/"
    namespace="http://wsdl2service.wmsmap" use="encoded" />
  </wsdl:input>
- <wsdl:output name="getLegendResponse">
  <wsdlsoap:body encodingStyle="http://schemas.xmlsoap.org/soap/encoding/"
    namespace="http://192.168.233.212:8080/axis/services/WmsMapService"
    use="encoded" />
  </wsdl:output>

```

```

    </wsdl:operation>
- <wsdl:operation name="getMap">
  <wsdlsoap:operation soapAction="" />
- <wsdl:input name="getMapRequest">
  <wsdlsoap:body encodingStyle="http://schemas.xmlsoap.org/soap/encoding/"
    namespace="http://wsdl2service.wmsmap" use="encoded" />
  </wsdl:input>
- <wsdl:output name="getMapResponse">
  <wsdlsoap:body encodingStyle="http://schemas.xmlsoap.org/soap/encoding/"
    namespace="http://192.168.233.212:8080/axis/services/WmsMapService"
    use="encoded" />
  </wsdl:output>
</wsdl:operation>
- <wsdl:operation name="getCapabilities">
  <wsdlsoap:operation soapAction="" />
- <wsdl:input name="getCapabilitiesRequest">
  <wsdlsoap:body encodingStyle="http://schemas.xmlsoap.org/soap/encoding/"
    namespace="http://wsdl2service.wmsmap" use="encoded" />
  </wsdl:input>
- <wsdl:output name="getCapabilitiesResponse">
  <wsdlsoap:body encodingStyle="http://schemas.xmlsoap.org/soap/encoding/"
    namespace="http://192.168.233.212:8080/axis/services/WmsMapService"
    use="encoded" />
  </wsdl:output>
</wsdl:operation>
</wsdl:binding>
- <wsdl:service name="WmsmapImpleService">
- <wsdl:port binding="impl:WmsMapServiceSoapBinding" name="WmsMapService">
  <wsdlsoap:address
    location="http://192.168.233.212:8080/axis/services/WmsMapService" />
  </wsdl:port>
</wsdl:service>
</wsdl:definitions>

```